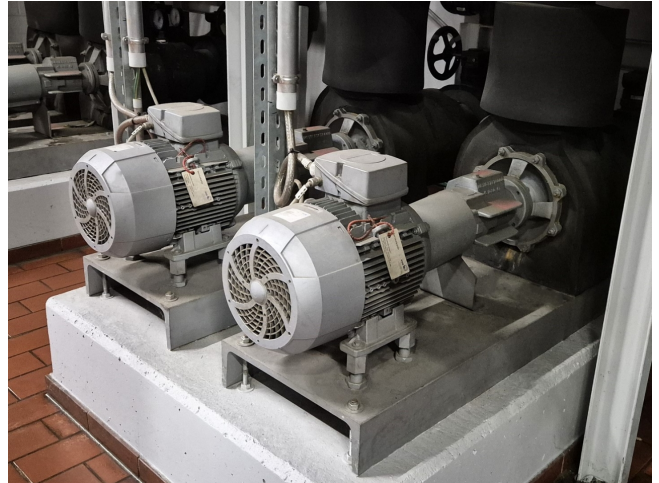


KSB ETANORM SYT 100-200 SYT8

Specifications

Marca	KSB
Tipo	ETANORM SYT 100-200 SYT8
Caudal volumétrico Q máx. (m ³ /h)	113,0
Altura de entrega H máx. (m)	12,5
Potencia máx. (kW)	5,5
Remarks	Y.o.b. 2014
Stock	2



Description

Used KSB ETANORM SYT 100-200 SYT8

Used KSB ETANORM SYT 100-200 SYT8 water pump with a KSB 1PC30381CB034CG0 electric motor - 50/60 Hz - 5,5/6,3 kW - 1465/1770 RPM. The pump has the following specifications: Qmax: 113,0 m³/h - Hmax: 12,5 m - Pmax: 5,5 kW. Dimensions: 1300x400x750 mm (LxWxH).

